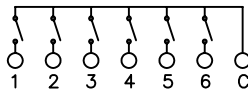


8 7 6 5 4 3 2 1

SCHEMATIC



SPECIFICATIONS

FUNCTION:
1 Pole 6 Position OFF-ON

RATINGS:
Switching: 10mA 5VDC
Steady: 100mA 50VDC

OPERATING FORCE:
800±50gf

CONTACT RESISTANCE:
Initial: 100mΩ Max. at 100mA
After Life: 200mΩ Max. at 100mA

INSULATION RESISTANCE:
100MΩ at 500VDC

WITHSTAND VOLTAGE:
300VAC For 1 Minute

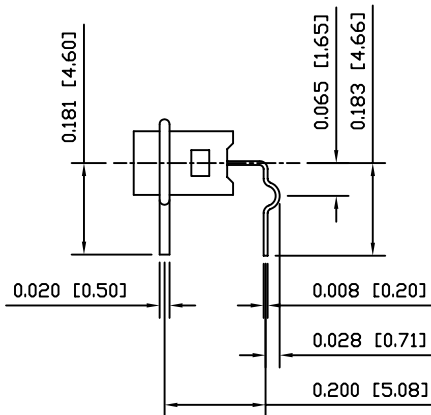
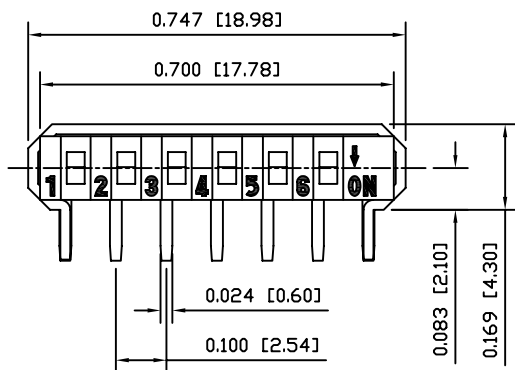
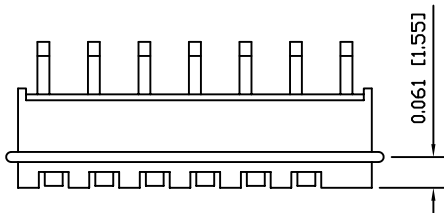
CAPACITANCE:
5pF Max.

ELECTRICAL LIFE:
500 Cycles per Switch Min.

SHOCK RESISTANCE:
Mil-Std. 202F, Method 213B
Gravity: 50G, 11msec.
Direction: 6 sides
Times: 3 Each Direction
High Reliability

VIBRATION RESISTANCE:
Mil-Std. 202F, Method 201A
Frequency: 10-55-10Hz/1 Minute
Direction: X, Y, Z
Time: 2 Hours Each Direction
High Reliability

TEMPERATURE:
Operating: -30°C to 80°C
Storage: -30°C to 80°C

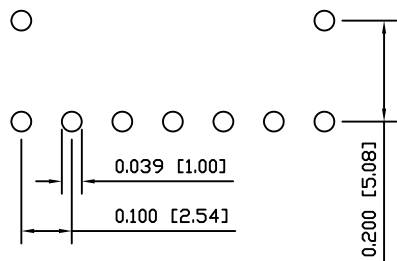


PACKAGING:
25 Pieces Per Tube

APPROVALS:



SUGGESTED PCB LAYOUT



MATERIALS

- BASE:**
Polybutylene Terephthalate (PBT), UL94 V-0
- COVER:**
High-Temp Nylon, UL94 V-0
- ACTUATOR:**
Liquid Crystal Polymer (LCP), UL94 V-0
- CONTACTS:**
Gold Over Nickel Plated Copper Alloy (C5210-EH)
- TERMINALS:**
Tin Plated Brass (C2680-H)

UNLESS OTHERWISE SPECIFIED,
DIMENSIONS ARE IN INCHES [MILLIMETERS]
TOLERANCES ARE:

DEC .X±0.2	ANG ± 1°
.XXX±0.008	DRAWING NOT TO SCALE
DRAWN BY: CARL BUCHHEIT	

	P.O. Box 25110 Portland, OR 97298	LAST REVISION: FEB. 16, 2006
	DRAWING NUMBER: 06-LDNA-06-B.dwg	
<h1>LDNA-06-B</h1>		

8 7 6 5 4 3 2 1